



WHAT YOU NEED TO KNOW ABOUT More Community Foundation



▶ ABOUT US

More Community Foundation* (MCF) is MORE Family Collection's corporate social investment unit. Development projects undertaken are all self-sustainable, as it is our belief that by empowering communities to contribute their own efforts and skills, projects are kept alive into the future. Everyone has a role to play, which inspires pride, a sense of security, and ultimately greater happiness in each member of the community.

Our leadership includes community representatives, a More family representative, and independent advisors. The majority of our trust's operational costs are covered by the family and their MORE Family Collection companies, with only 7.5% of donor funds used for this purpose. This means that 92.5% of all donations are channelled into approved beneficiary projects.

*B-BBEE Level 1-certified and a Section 18A-approved Public Benefit Organisation

▶ OUR PURPOSE

More Community Foundation's (MCF) purpose is to give long-term, sustainable assistance to MORE Family Collection's local communities and to empower people in need.

We fulfil this through our development projects, which support: child education and adult skills development; local black business enterprise development; improving living standards; and access to clean, running water.

▶ OUR CORE PILLARS



1. Child Education and Adult Skills Development

We support early childhood development and care, primary and high schooling, tertiary education and training (in ICT, Nature Conservation, Hospitality), as well as adult skills development through community-based learning programmes.

Upskilling our people not only allows them to enter the workplace, but also to create their own jobs and employment for others.

2. Local Black Business Enterprise Development

We support the development of local black businesses and provide MORE Family Collection-supported enterprise opportunities to drive demand and enable them to trade locally.

In creating business, employment and a market, this gives many more people the opportunity to escape poverty and build a better life for themselves, as well as to work together to build their communities and contribute to South Africa's economy.

3. Improving Living Standards

We support the provision of basic needs to improve our people's quality of life and ensure their well-being. Our main focuses are on providing access to security, basic healthcare, proper sanitation and clean, running water.

Water is by far the greatest necessity, the availability of which will go a long way to securing the future of our communities, and therefore warrants its own project focus.

4. Access to Clean, Running Water

We support access to clean, running water through the installation of solar-powered boreholes in our most underprivileged communities. To ensure sustainable access, we are also developing a pilot borehole water-supply model in Huntington village, Mpumalanga.

If viable, it could be implemented in all MCF-supported communities. Currently, many of South Africa's rural areas have limited or no water service. This is a fundamental human right which, realised, prevents illness and reduces mortality, especially amongst children.

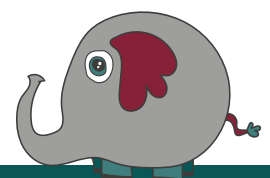
5. Conservation & Human Wildlife Mitigation

The care and protection of the earth's natural environment and resources for future generations. Including the planned management of natural resources, maintaining diversity of species, genes, and ecosystems, as well as the natural functions of the environment using community-based conservation, environmental education and supporting human wildlife conflict mitigation where possible.

Every species and natural habitat has a role to play in the delicate balance of nature and our planet's health which not only provides habitat for us but also provides the three critical resources we need to live: oxygen, water and food. On top of the bare necessities for survival, natural ecosystems and our rich diversity in wildlife is a key economic driver in Africa through tourism, bringing in trillions every year. Tourism ripples into many other sectors as well as local community development and an overall boost to the countries economy. Socially inclusive conservation is critical to biological diversity and MCF strives to achieve community collaboration and custodianship.

Our conservation projects include:

- Victoria Falls Black Rhino Conservation Project
- Endangered Wildlife Trust – Wild Dog Project
- Community Field Guide Training
- School Safari Program
- Human Wildlife Conflict Mitigation





1. CHILD EDUCATION AND ADULT SKILLS DEVELOPMENT



Henna Preschool

In collaboration with: Lion Sands Game Reserve, Mpumalanga

MCF's inaugural project, Henna Preschool is a rural ECD centre located in Huntington Village. The school supports 170 children from 2–7 years, as well as a few infants of teenage mothers who are encouraged to complete their own schooling.

NEEDS: Playground shade netting, new geyser, roof paint, classroom and bathroom renovations, security house



Jabez Preschool

In collaboration with: Lion Sands Game Reserve, Mpumalanga

MCF's newest ECD centre, Jabez opened in January 2018 and was made possible by the Britt More Memorial Fund. Located in the rural village of Justicia B, the school has started with one classroom and currently supports 35 children.

NEEDS: Vegetable garden, kitchen, security fixtures, jungle gym, roof paint, floor tiles, additional classroom, teaching equipment



Itekeng Basha Crèche

In collaboration with: Madikwe Game Reserve and its staff, Kgatelopele Community Service Team, North West Province

This ECD centre is located in the impoverished Obakeng Village, neighbouring Madikwe Game Reserve, and cares for 35 local children to give them the best possible start and hope for a better life.

NEEDS: Vegetable garden, kitchen playground, water system, indoor and outdoor paint



Injongo Educare Crèche

In collaboration with: Cape Cadogan Boutique Hotel and More Quarters Hotel, Cape Town

Managed by MATCHBOX South Africa, Injongo cares and provides daily meals for 125 children. Situated in the Township of Mfuleni, the little school is built out of upcycled shipping containers to create a space of fun and safety for the children.

NEEDS: Vegetable garden, perimeter fencing, jungle gym



Heuningvley Primary School

In collaboration with: Marataba and Marataba Community & Conservation Foundation, Limpopo

Heuningvley educates almost 200 learners, between 6 and 17 years, from the local farming community and Marakele National Park. The school is struggling due to a serious lack of funding, teachers, and infrastructure.

NEEDS: Teacher training, borehole, electricity supply, vegetable garden, kitchen



Masuwe Primary School

In collaboration with: Stanley & Livingstone Boutique Hotel, Victoria Falls

This impoverished school in the rural village of Woodlands (near Victoria Falls Private Game Reserve) does its best to give 160 keen learners a good education, despite a lack of infrastructure posing severe challenges.

NEEDS: Classrooms, bathrooms, vegetable tunnels, kitchen, jungle gym

In collaboration with: Lion Sands Game Reserve, Mpumalanga

The campus, opened in partnership with the Good Work Foundation in June 2017, gives the Huntington community access to education through digital technology. Three learning programmes – Open Learning Academy, Bridging Academy, and Career Training Academy – empower local children (from 3 years), as well as adult learners (up to the age of 70) to grasp the digital world and all its opportunities that they wouldn't otherwise have access to.

NEEDS: Any donations towards operating costs would be greatly appreciated

Huntington Digital Learning Campus



2. LOCAL BLACK BUSINESS ENTERPRISE DEVELOPMENT



Tshemba Initiative

In collaboration with: Lion Sands Game Reserve, Mpumalanga

Tshemba (Shangaan for 'hope') gives a group of unemployed women from the local community the chance to upskill and create their own source of income. Phase one of the initiative is teaching the ladies to sew soft animal toys and the business skills to run their own small enterprise selling them. Lion Sands purchases the toys to place in its lodges for young guests and to be sold as souvenirs in its MORE Galleries. Phase two of the project will include shopper bags. The initiative is being piloted with Lion Sands and will be rolled out to all of MORE Family Collection's local communities in its final phase.



iKhaya Le Langa Homestay Hotel

In collaboration with: iKhaya Le Langa, Cape Town

MCF has partnered with the iKhaya Le Langa community development NPO to support its Langa Quarter Homestays initiative. The hotel – a 40-bed cluster of homestay accommodations in residents' homes – empowers local hospitality entrepreneurs, promotes tourism, and helps to uplift the area. MCF assists with funding and training, as well as facilitates guest bookings.

3. IMPROVING LIVING STANDARDS



Soul Food

In collaboration with: MORE Family Collection, South Africa and Zimbabwe

This is a MORE Family Collection staff programme, facilitated by MCF, which encourages our people to live the MORE values and give back to their local communities. They do this by lending a hand at MCF's development projects through our Get Your Hands Dirty initiatives, which sees them roll up their sleeves to help out with building, maintenance, gardening, cleaning, cooking, childcare, and any other tasks that contribute to the projects' success and communities' well-being.



Frida Hartley Shelter

In collaboration with: MORE Family Collection Head Office, Johannesburg

Frida Hartley in Yeoville, Johannesburg does inspiring work taking in homeless women and their children, who are the victims of poverty, abuse and neglect, and empowering them to become independent. A programme is created for each woman offering counselling, job-skills training, referrals to employment, and childcare is also provided. MCF, together with MORE, assists the shelter with funding, maintenance, training, and mentorships.

4. ACCESS TO CLEAN, RUNNING WATER

*In The Pipeline... Huntington Pilot Water Project
MCF is undertaking an exploratory research project into a sustainable water supply programme for rural Southern African communities.*

Community Borehole Installations

In collaboration with: Lion Sands Game Reserve, Mpumalanga; Franklin Electric SA and JG Africa, Johannesburg; Stanley & Livingstone Boutique Hotel, Victoria Falls

MCF is installing boreholes in the villages of Huntington (Mpumalanga) and Woodlands (Victoria Falls). In Huntington, before the first borehole in 2006, all 6 000 residents had to rely on one municipal borehole, connected to 18 taps that are randomly supplied once a week. In Woodlands, the recent drilling of three boreholes has given residents, who previously collected their water from a wildlife dam, access to clean, running water for the first time!



▶ GET INVOLVED – GUEST EXPERIENCES

“How can I make a difference?” – Many of MORE Family Collection’s guests are looking to form a real connection with the places they visit by giving back in tangible ways, which enrich the lives of people here – and guests’ own through these experiences.

In response, MCF has specifically created a number of experiences that give guests opportunities to encounter different (and humbling) ways of life; visit culturally and historically significant sites; and meet local people, while positively impacting their lives. All experiences can be arranged directly with the lodges and hotels, or booked in advance through central reservations.

GET YOUR HANDS DIRTY

The most popular way for guests to get involved by helping out with project tasks that address local community needs around education, infrastructure, health and environment. These extraordinary social experiences bring them into the heart of Southern Africa and make for a more meaningful journey.

The activities below are an outline of what guests can expect, although each can be customised – guests choose where they wish to help and use their skills to make a difference. Tasks also constantly change and at any point – there is always a lot to be done.

PLEASE NOTE:

Get Your Hands Dirty experiences are subject to availability; current community needs; projects’ statuses; and school terms

Duration: ±3 hours, including transfers
Cost: US\$50 per person
Number of guests: 2–10 (depending on the transfer vehicle available)

EDUCATION ACTIVITIES ± 4 hours (including travel time)

Graduation Cap

Mini teaching experience, supported by lesson cards on easy to demonstrate modules (e.g. colours, days of the week, numbers), or a pre-structured creative activity (e.g. finger painting or painting masks) with a small group of children.

Storytellers

One-on-one reading practice, with a primary school child in Grade 1, 2, 3 or 4.

INFRASTRUCTURE ACTIVITIES ± 4 hours (including travel time)

Roll Up Your Sleeves

Renovation and upgrades assistance (e.g. digging, building, painting) at one of MCF’s projects.

Keep It Clean

Infrastructure clean-up (e.g. washing and cleaning classrooms, kitchens, bathrooms, equipment) to maintain MCF projects’ facilities.

HEALTH & ENVIRONMENT ACTIVITIES ± 4 hours (including travel time)

Root to Mouth

Preparing, cooking and serving food for school children, starting with picking fresh produce from the school’s veggie garden.

Water Bearer

Water collection, with community members from a village’s borehole water stations.

Health Wise

Pre-structured health education session (e.g. on personal hygiene, girls sanitary care), taught to a small group of high school learners.

Play Ball

Soccer and netball games, with high school learners as part of their sports and physical education.

Helping Hands

Providing nursing home support and spending one-on-one time with a retiree, or offering day care support by feeding, bathing and changing babies.

Street Sweepers

Litter clean-up at predetermined sites (e.g. schools, churches, streets).

Green Fingers

Planting, tending or harvesting a school veggie garden, or planting trees at predetermined sites in and around a village.



COMMUNITY TOURS

Over the years, MCF has built close relationships with MORE Family Collection's local communities in rural villages and urban townships. Guests are welcomed in to meet the residents, visit MCF projects, and see something of life here – a humbling and rewarding experience. Although MCF Community Tours are largely customised for each guest or group, five of the most popular tours are highlighted below.

PLEASE NOTE:

Community Tours are subject to availability; and include welcome drinks, transport in an air-conditioned vehicle (except when a safari vehicle is used), a registered tour guide, bottled water and cold towels



For Guests of Lion Sands Game Reserve

This tour offers insights into rural village life and its everyday experiences. Included in the itinerary is MCF's Jabez Preschool in Justicia B – to meet the teachers, spend some time with the children, and see the work we are doing with them; and the MCF-supported Huntington Digital Learning Campus in Huntington – where guests can engage with the tutors and learners, and take a walk-through of this world-class online learning facility.

Optional experiences (at an additional cost, TBA): Visit to a local sangoma (traditional healer); visit to a village Induna (chief); traditional cooking lesson

Duration: ±3 hours | Number of guests: 2–10
Cost: US\$40 per person

For Guests of Madikwe Safari Lodge

This tour takes guests into the village of Obakeng for a candid look in to local life here. The tour includes a visit to one of MCF's dearest projects, Itekeng Basha Crèche where 35 littlies are cared for and given the best possible start to life with ECD education. The children love having visitors and guests can spend some time with them, helping out with a learning activity and playing – it'll make their day!

Duration: ±2 hours | Cost: US\$40 per person
Number of guests: 2–4, arrangements can be made for larger groups and additional costs may apply

For Guests of Marataba

This tour takes guests on an educational drive through the rural areas to visit one of MCF's most-in-need projects. Heuningvley is the only primary school for miles, doing its best to provide a good education to the children of local farm workers and reserve staff. Guests meet some of the teachers and children, and are shown around the school to give them some insight into the work we do and the daily life of local communities.

Duration: ±2 hours | Cost: US\$40 per person
Number of guests: 2–4, arrangements can be made for larger groups and additional costs may apply

For Guests of Cape Cadogan Boutique Hotel and More Quarters Hotel

This tour gives a very personal and authentic look into life in the townships. The tour begins with a stop in at the MCF-supported Injongo Educare Crèche, Mfuleni where guests can help to make or serve the children breakfast, and read, play ball and have singalongs with them. This is followed by a short walk down the road to where the crèche began at the home of inspirational founder, Mavis Ngcongolo who will be there to greet the group.

Then it's on to the township of Khayelitsha where guests can see the whole of Cape Town's biggest location from Lookout Hill at the Tourism Centre, before taking a drive through the streets, hearing about its history and people as they go.

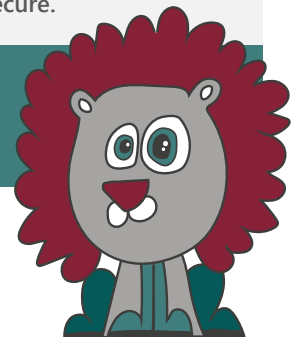
The tour's last stop is Langa (meaning 'sun') and arguably Cape Town's most vibrant and progressive settlement. Here, guests visit Langa Heritage Museum in The Old Pass Court building, Guga Sthebe Arts & Culture Centre for local empowerment, and Langa Quarter where the Ikhaya Le Langa project is furthering social enterprise and creating a tourism hotspot.

Duration: 3-4 hours | Number of guests: 2–7
Cost: US\$100 per vehicle (2–4 guests) | US\$200 per vehicle (5–7 guests)

For Guests of Stanley & Livingstone Boutique Hotel and Ursula's Homestead

This tour introduces guests to the Woodlands community, on the fringe of Victoria Falls Private Game Reserve, that faces extreme challenges. The tour centres on Masuwe Primary School, where 160 children give it their all to learn, despite sharing buildings with livestock, having only three teachers, and studying by candlelight. MCF is making extensive upgrades at Masuwe and guests are invited to see the progress, meet with the school's headmistress and a few community elders, and introduced to the children whose futures MCF is working to secure.

Duration: ±4 hours
Number of guests: 2–9
Cost: US\$50 per person



▶ GET INVOLVED – PACK FOR A PURPOSE

For guests of all MORE Family Collection lodges and hotels

Through MCF, MORE Family Collection is affiliated with Pack For A Purpose. This global initiative encourages travellers to bring with them much-needed supplies for MCF's school projects, which are also supported by the MORE Family Collection properties they will be staying at. Each property is listed on www.packforapurpose.org, along with its associated project/s and their wish list (click on the links below). Guests may come for a brief stay, but when they Pack For A Purpose, their visit makes a lasting difference to our communities.

LION SANDS GAME RESERVE

Project #1 Henna Preschool
Project #2 Jabez Preschool
Project #3 Hunzokani Primary School

MADIKWE SAFARI LODGE

Project #1 Itekeng Basha Crèche
Project #2 Motshabaesi Primary School

MARATABA / NJ MORE FIELD GUIDE COLLEGE

Project #1 Heuningvley Primary School

CAPE CADOGAN BOUTIQUE HOTEL / MORE QUARTERS HOTEL

Project #1 Injongo Educare Crèche

STANLEY & LIVINGSTONE BOUTIQUE HOTEL / URSULA'S HOMESTEAD

Project #1 Masuwe Primary School

▶ GET INVOLVED – DONATIONS



Guest Donations

Guests can easily add a contribution to their final accommodation account at checkout from their lodge or hotel.



Online Donations

Guests can sponsor a child, teacher or borehole, or spare any pennies they can via MCF's secure online donation portal: help.morecommunitytrust.co.za

SnapScan

Guests can simply scan the below QR code and enter the amount they wish to contribute.



Snap here to pay



Supplies/Services Donations

Private and business donors can contact a Community Liaison Officer for MCF's wish list and to arrange delivery of their contribution:

- Norman Mutirwara, MORE Head Office – +27 (0)11 880 9992



▶ GET INVOLVED – THE EXTRA MILE

Bushbuckridge community in harmony with nature conservation. The whole event takes place over a fun-filled two days and has evolved to include a Community Education Day, Trail Run Pre-Registration, and the main 5km/10km/21km Trail Run.



▶ GET IN TOUCH – Join us in uplifting our surrounding communities

Michelle Scott | General Manager | +27 (0) 72 475 3355 | michelle@more-cf.org | morecommunityfoundation.org

Please like our More Community Foundation Facebook page (<https://www.facebook.com/morecommunityfoundation/>) and Follow us on Instagram (<https://www.instagram.com/morecommunityfoundation/>) for updates and news...